

Originally produced by Half Moon Theatre and Z-arts

GRANDDAD ANANSI

BY ELAYNE OGBETA

FRESHEET



NOTES FROM THE DIRECTOR

In the last four weeks Silki, Jola, and Segun have driven over 450 miles taking Grandad Anansi to primary schools across Suffolk. Because of their travels over 2,500 young people have had the chance to experience Elayne Ogbeta's brilliant story, Tayo Akinbode's dangerously catchy music, and Sorcha Corcoran's lovely set. For some of them Grandad Anansi will have been their first experience of the thrill of live performance. They couldn't have been in better hands.



TONY CASEMENT

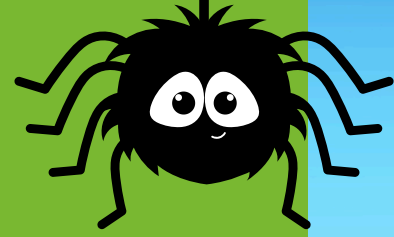
If it's your first time, we hope you enjoy watching this warm, wonderful and dedicated company bringing our story to life (and please note that it's traditional – and compulsory – to join in when asked).

Thank you to everyone at the New Wolsey Theatre, the teachers, pupils and staff of all the schools we visited, and ACYCLE (African and Caribbean Youth Creative Learning Experience) who have worked with us to develop the show and facilitated our community performance in Bethel Church.

The original production of Grandad Anansi was directed by Christopher Yarnell and produced by Half Moon and Z-arts who have allowed us to use their set, score, and props. John Grose, Ipswich, generously provided us with an electric van, and by reusing elements from the original production and touring in that lovely van (which I believe can be hired from John Grose at very reasonable rates), we have been able to create our own version of the show while reducing waste and the carbon footprint of our work. Thanks to them all.

Take care
Tony

CREATIVE TEAM



Tayo Akinbode - Composer

Tony Casement - Director

Sorcha Corcoran - Set & Costume Designer

Oakey Hand - Production Manager

**Sally Howard - Additional Costume and
Prop Maker**

Becky Loose - Wardrobe Maintenance

Silki D Morrison - Stage Manager

Elayne Ogbeta - Writer

Bradley Travis - Originating Producer

Christopher Yarnell - Originating Director

WE WOULD LIKE TO THANK

**John Grose Ipswich, Half Moon Theatre, Z
Arts and ACYCLE.**



CAST

Segun Lawal as Grandad Anansi

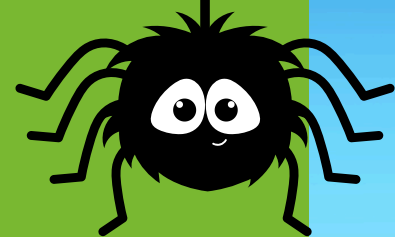
Dr. Segun Lawal is a distinguished arts manager and creative producer whose career spans over 27 years across four continents.

A 2008 Fellow of the John F. Kennedy Center for the Performing Arts in Washington, D.C. and a 2021 Exceptional Global Talent endorsed by Arts Council England, Dr. Lawal has mentored and trained more than 3,000 artists, choreographers, directors, dancers, producers, and cultural managers in both screen and stage disciplines.

In 1997, he founded the Spirit of David dance club, focused on youth empowerment and performance art. A landmark achievement included producing two seasons of Africa's most successful entertainment television show in 2007 and 2009, reaching a registered viewership of 30 million.

He served as the inaugural Vice Chair of the Society for the Performing Arts in Nigeria and currently holds a directorial role at Sixty-Ten Arts Management Consulting in the United Kingdom.

Passionate about design, storytelling and dance theatre, Dr. Lawal has scripted and performed in over 125 productions across 49 cities worldwide, consistently blending the unorthodox with cultural resonance.



Jola Awosusi as Abi

Jola is a versatile screen and stage actress with a love for music. She trained at East 15 Acting school, gaining her BA honours.

She is constantly inspired by the stage and how she can bring her own interpretations and works to life!

Elayne Ogbeta - Writer

Elayne Ogbeta is an award-winning children's writer and playwright based in Salford. Her play Grandad Anansi, originally produced by Half Moon Theatre and Z-arts, won Best Performance at the Manchester Culture Awards 2023 and has toured nationally.

Elayne writes stories that celebrate heritage, family, and imagination, often drawing on Caribbean folklore and the Anansi tradition. Alongside her theatre work, she is a published poet and the author of the children's picture book Anansi and the Dutchy Pot.

She holds a BA in Creative Writing and an MA in Creative Writing for Children. Elayne is passionate about creating joyful, meaningful work for young audiences and continues to develop new plays, stories, and creative projects.

Box Office: 01473 295900

Email: tickets@wolseytheatre.co.uk

Website: wolseytheatre.co.uk

THE SHOW



WILL GREEN
SHOW PHOTOGRAPHER



The New Wolsey Theatre is a registered charity (No.1082016) and we rely on funding partners and investors in order to continue our work serving the people of Ipswich and the wider community. We gratefully acknowledge their support.



Box Office: 01473 295900
Email: tickets@wolseytheatre.co.uk
Website: wolseytheatre.co.uk

